

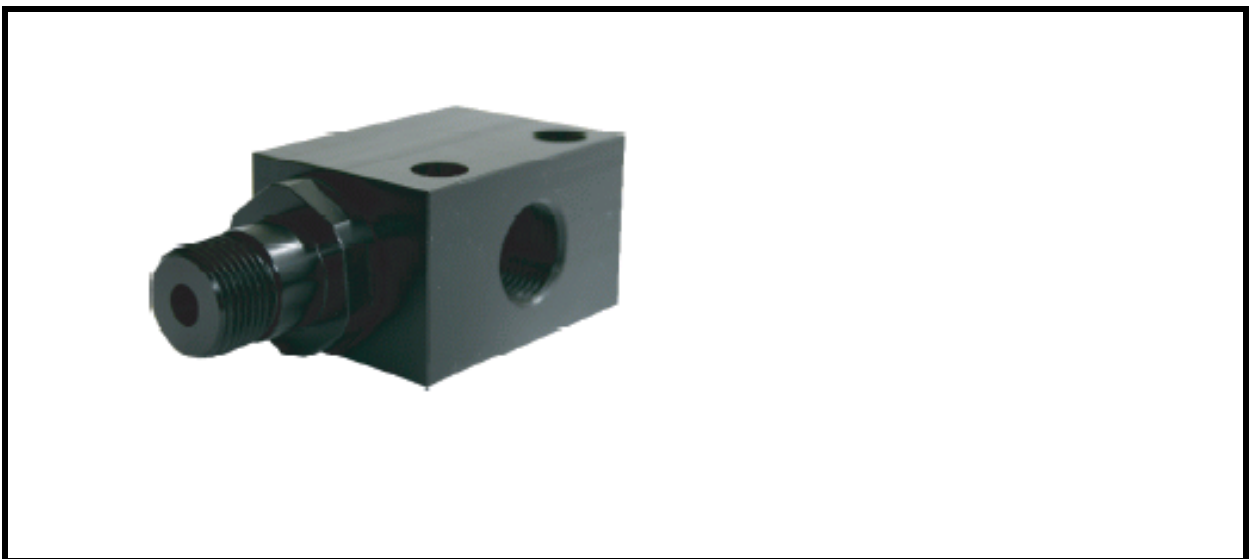
# KUNSTOFF-EJEKTOREN. VP-POM-SERIE.

Vacuum pumps, industrial vacuum, robotic vacuum, vacuum lifting systems, vacuum pumps

## Die Vakuum Pumpe für vakuum Lebensmittel Bereich.

### APPLIKATIONS:

- DAIRY INDUSTRIE.
- FOOD-LINE ROBOTICS.
- CHEESE HANDLING
- CHEMICAL-FLUID & SPRAY.
- DE-GASSING OF CHEMICAL FLUID TANKS.
- MEDICAL SUCTION SYSTEMS.
- NON-CLOGGING HOMOGENE MIXING OF POWDER & FLUID INTO GEL.



Typ	: <b>VP-POM-15</b>
Material-Body	: POM -C ( Black )
Material innerparts	: POM-C- ( Black)
Dimensions	: 78X30X37 mm ( LXBXH).( without silencer)
Weight	: 0,085 Kg
Connection Compressed air	: 1/4" BSP.
Connection Vacuum	: 3/8" BSP
Connection Exhaust	: 3/8" BSP
Connection Sensor/Gauge	: On request
Mechanical Fixation	: 2 Through 6 mm hole,s .
Nozzle Orifice	: 1,5 mm.
Max vacuumlevel	: - 92%
Max vacuumflow	: 95 NL/min ( At Feedpressure 4-6 Bar)
Air consumption	: 140NL/Min.
Noise Level	: 65 dBA z Without silencer
Evacuation Time	: 1 min-----> -60% ( Tank 45 liter)