

INDUSTRIAL SAFETY VALVE. VP-SHV-SERIE.

Vacuum pumps ,industrial vacuum, robotic vacuum, vacuumliftingsystems ,vacuum pumps , vacuum lifter.

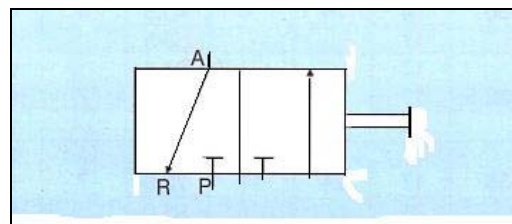
MANIPULATOR HANDLING, Manuele Hebe Geräte .

SHUT-OFF- NON-PRESSURING SYSTEM

VACUUM HANDLING (Locked against Shut-off) **SAFETY-DEVICE**)

COMPRESSED AIR SYSTEMS. (Locked against Shut-off)

Pressure range -1 to + 10 Bar,.Compact and easy to install (inline with tubing)



<u>TYP</u>	A	B	C	D1	D2	G	SW	FLOW	WEIGHT.
VP-SHVG1/2BSP	99,5	29	15,7	38,5	29	G1/2"	27	16M3/h	358. gr
VP- SHVG3/4BSP	110	39	18,0	44,5	35	G3/4"	32	50M3/h	510 gr.

